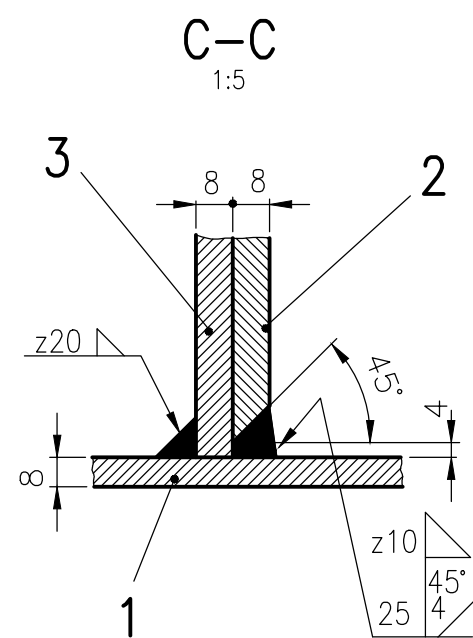
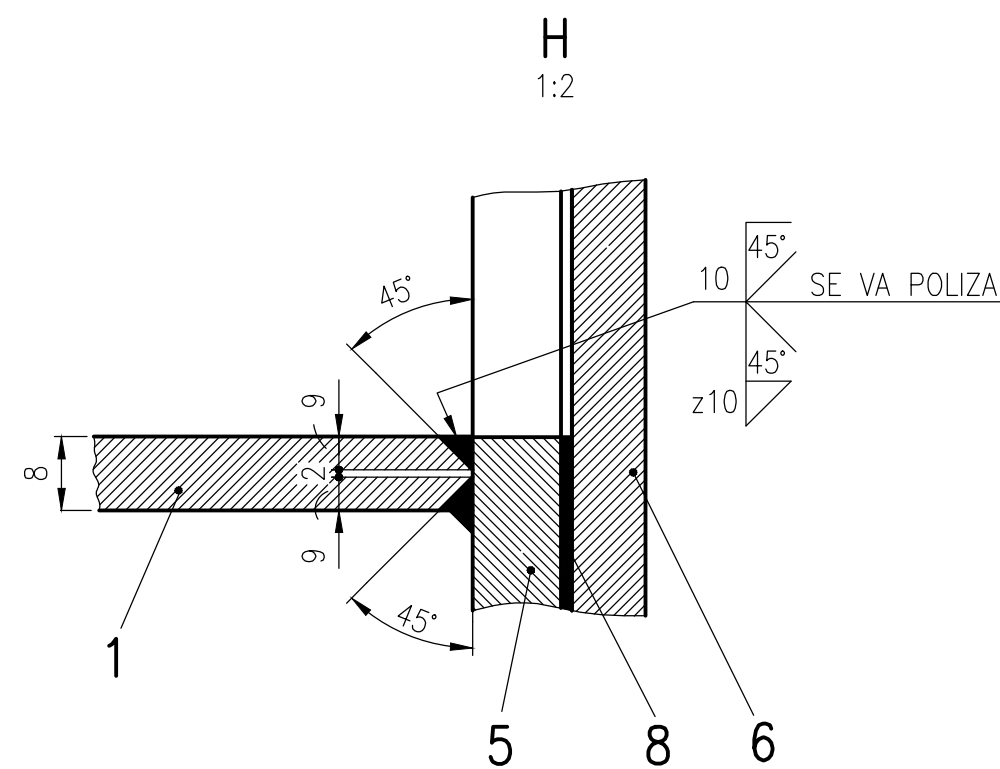


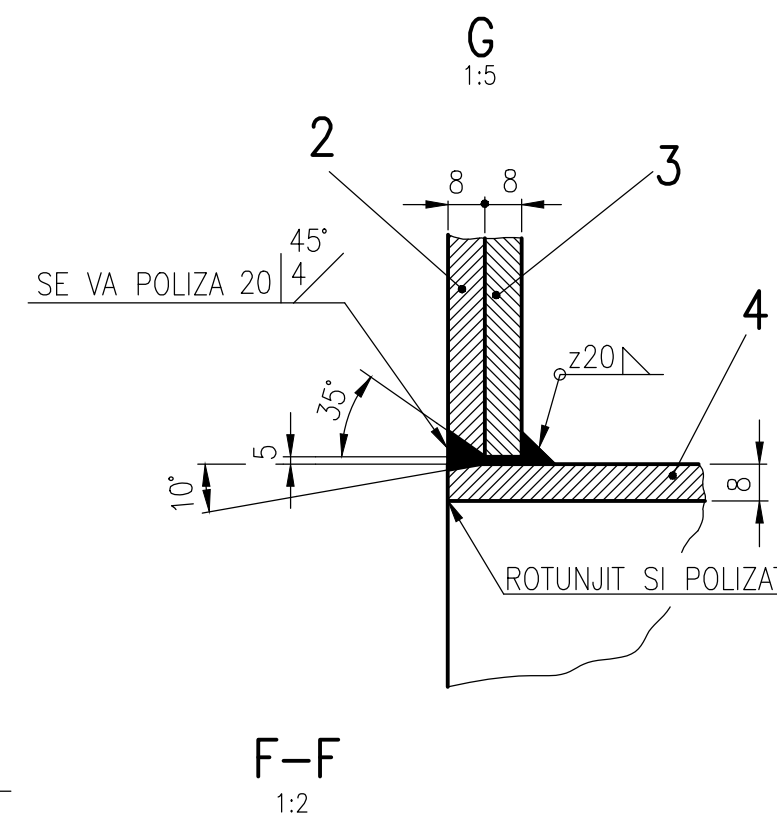
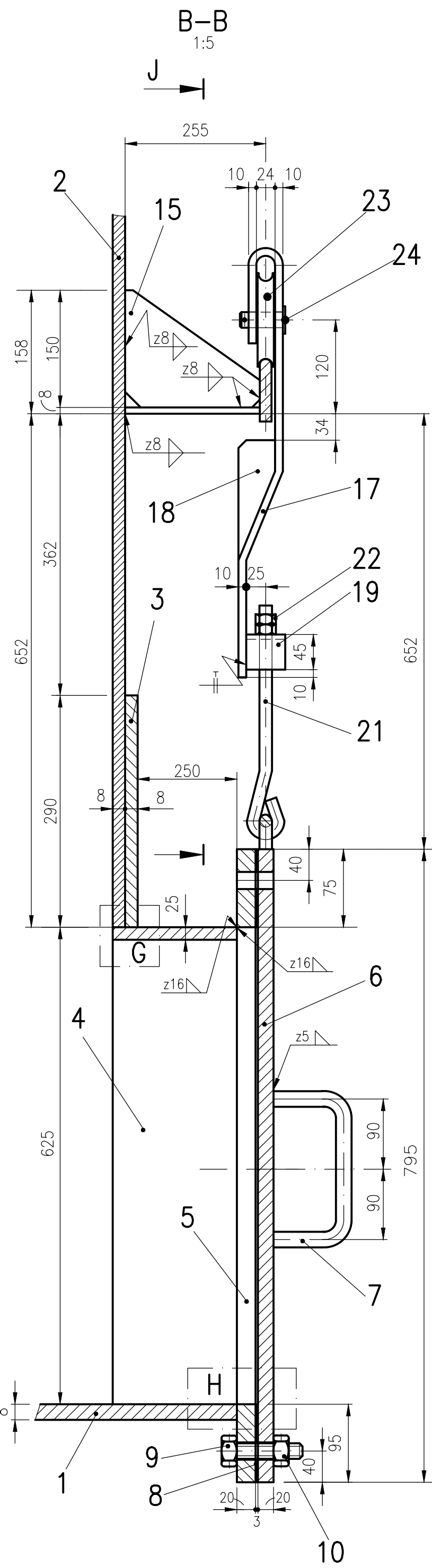
DETALIU CALE DE RULARE



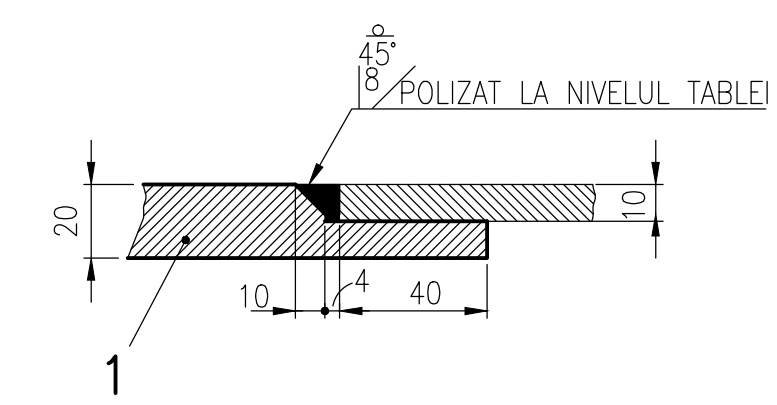
C-C



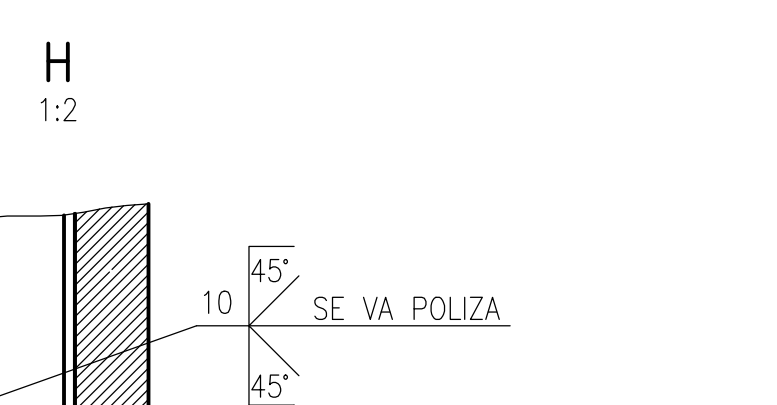
H



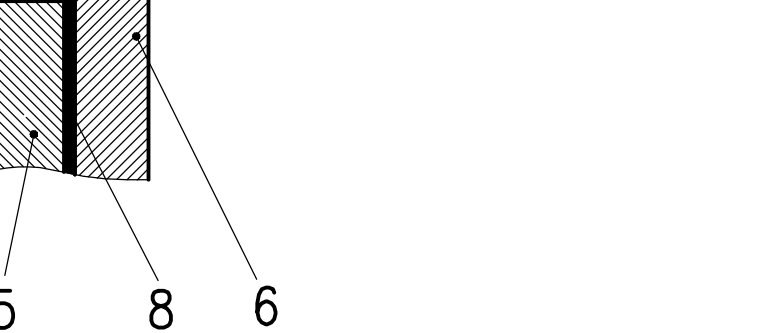
F-F



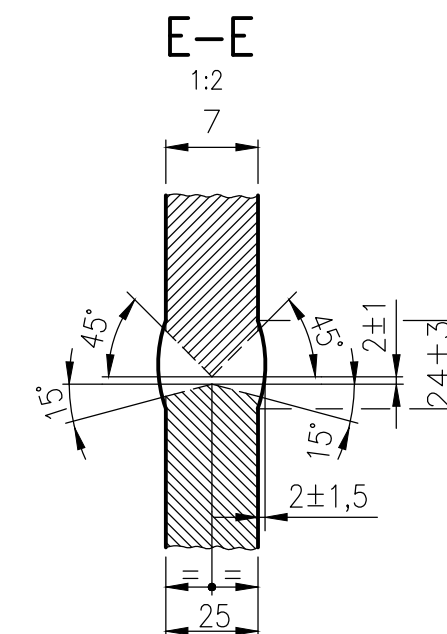
1



1



1



NOTA

- GURA DE CURATIRE SE ASAMBLEAZA COMPLET IN UZINA.
- DUPA EFECTUAREA TUTUROR SUDURILOR, GURA DE CURATIRE SE SUPUNE IN UZINA LA UN TRTAMENT DE DETENSIONARE. TRATAMENTUL SE EXECUTA LA 600°-650°C.
- SUDURILE SE VOR CONTROLA CU LICHIDE PENETRANTE, INAINTE SI DUPA TRATAMENT.

POZ.	DENUMIREA	REFERINTA	BUC.	MATERIAL	OBS.	M.NETA KG/BUC
26	SPLINT 4x32	STAS 1991 ISO 1234	1	S235J2	CADMIAT	0,003
25	SAIBA 20	STAS 1388-72	1	S235J2	CADMIAT	0,017
24	BOLT Ø20	-	1	S235J2	CADMIAT	0,15
23	ROLA	-	1	S235J2	CADMIAT	2,0
22	PIULITA M16	STAS 4071	2	S235J2	CADMIAT	0,045
21	SURUB CU OCHI	-	1	S235J2	-	0,57
20	URECHE	-	1	S235J2	-	0,15
19	SURUB M20x80	-	1	S235J2	-	0,4
18	RIGIDIZARE	-	1	S235J2	-	0,3
17	SUPORT ROLA	-	1	S235J2	-	4,4
16	GUSEU	-	1	S235J2	-	1,05
15	GUSEU	-	1	S235J2	-	1,2
14	RIGIDIZARE	-	1	S235J2	-	1,0
13	RIGIDIZARE	-	1	S235J2	-	1,25
12	OPRITOR	-	2	S235J2	-	0,35
11	CALE DE RULARE	-	1	S235J2	-	12,25
10	PIULITA M20	ISO 4033	36	S235J2	CADMIAT	0,075
9	SURUB M20x80	ISO 4017	36	S235J2	CADMIAT	0,19
8	GARNITURA	-	1	MU5-250xg2x3	FARA ASBEST	-
7	MANER	-	2	S235J2	-	0,54
6	CAPAC	-	1	S235J2	-	92,2
5	FLANSA	-	1	S235J2	-	33,8
4	TABLA STUT	-	1	S235J2	-	55,0
3	TABLA INTARIRE	-	1	S235J2	-	214,0
2	TABLA VIROLA	-	1	S235J2	-	883,2
1	PLACA FUND	-	1	S235J2	-	183,0

Rev.	Descriere	Data	Semnat	Rev.	Descriere	Data	Semnat
1	Intocmit	Verificat	Aprobat	1	Intocmit	Verificat	Aprobat
2	Intocmit	Verificat	Aprobat	2	Intocmit	Verificat	Aprobat
3	Intocmit	Verificat	Aprobat	3	Intocmit	Verificat	Aprobat
4	Intocmit	Verificat	Aprobat	4	Intocmit	Verificat	Aprobat
5	Intocmit	Verificat	Aprobat	5	Intocmit	Verificat	Aprobat
6	Intocmit	Verificat	Aprobat	6	Intocmit	Verificat	Aprobat
7	Intocmit	Verificat	Aprobat	7	Intocmit	Verificat	Aprobat
8	Intocmit	Verificat	Aprobat	8	Intocmit	Verificat	Aprobat
9	Intocmit	Verificat	Aprobat	9	Intocmit	Verificat	Aprobat
10	Intocmit	Verificat	Aprobat	10	Intocmit	Verificat	Aprobat
11	Intocmit	Verificat	Aprobat	11	Intocmit	Verificat	Aprobat
12	Intocmit	Verificat	Aprobat	12	Intocmit	Verificat	Aprobat
13	Intocmit	Verificat	Aprobat	13	Intocmit	Verificat	Aprobat
14	Intocmit	Verificat	Aprobat	14	Intocmit	Verificat	Aprobat
15	Intocmit	Verificat	Aprobat	15	Intocmit	Verificat	Aprobat
16	Intocmit	Verificat	Aprobat	16	Intocmit	Verificat	Aprobat
17	Intocmit	Verificat	Aprobat	17	Intocmit	Verificat	Aprobat
18	Intocmit	Verificat	Aprobat	18	Intocmit	Verificat	Aprobat
19	Intocmit	Verificat	Aprobat	19	Intocmit	Verificat	Aprobat
20	Intocmit	Verificat	Aprobat	20	Intocmit	Verificat	Aprobat
21	Intocmit	Verificat	Aprobat	21	Intocmit	Verificat	Aprobat
22	Intocmit	Verificat	Aprobat	22	Intocmit	Verificat	Aprobat
23	Intocmit	Verificat	Aprobat	23	Intocmit	Verificat	Aprobat
24	Intocmit	Verificat	Aprobat	24	Intocmit	Verificat	Aprobat
25	Intocmit	Verificat	Aprobat	25	Intocmit	Verificat	Aprobat
26	Intocmit	Verificat	Aprobat	26	Intocmit	Verificat	Aprobat